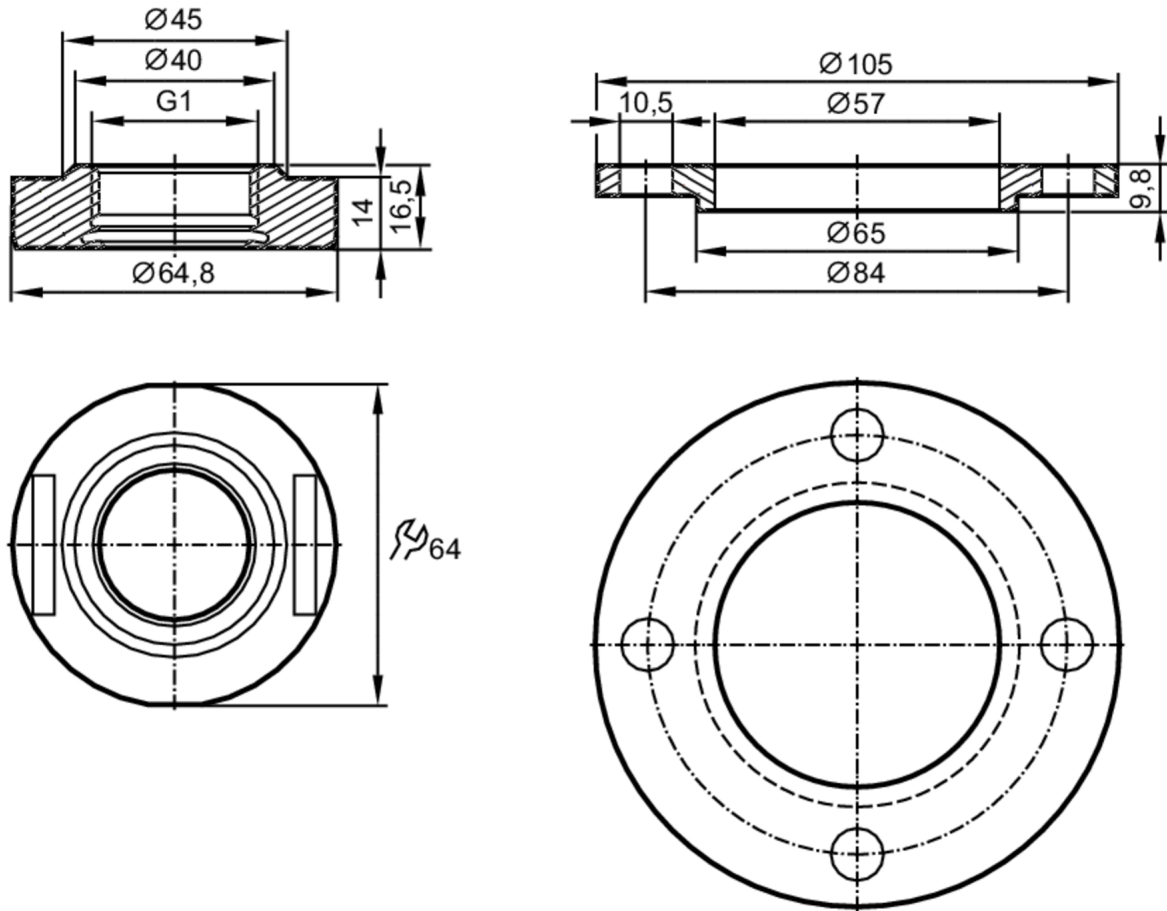


Process adapter with flange plate DRD

ADAPT IFM-DRD D=65



EC 1935/2004 

Application		
Pressure rating	25 bar	2.5 MPa
Tests / approvals		
Pressure Equipment Directive	A possible classification to PED depends on the application and has to be carried out by the user / operator.	
Safety instructions	The compatibility between medium and product material has to be checked in all applications.	
Mechanical data		
Weight	[g]	615
Materials (wetted parts)	stainless steel (316L/1.4435) surface characteristics: Ra < 0,4 µm / Rz = 4 µm	
Sensor connection	G 1 internal thread Aseptoflex Vario	
Process connection	DRD-Flansch Ø 65 mm Ø 105 mm	
Sealing	Gasket	
Hygienic equipment class to DIN 11866	H4	
Accessories		
Items supplied	O-ring: 1 x (24 x 2 mm), EPDM, FDA compliant, E30054	

E33242



Process adapter with flange plate DRD

ADAPT IFM-DRD D=65

Accessories (optional)	O-ring: 1 x 24 x 2, FKM, FDA compliant, E30123 sealing ring: 1, PEEK, FDA compliant, E30124
Remarks	
Pack quantity	1 pcs.