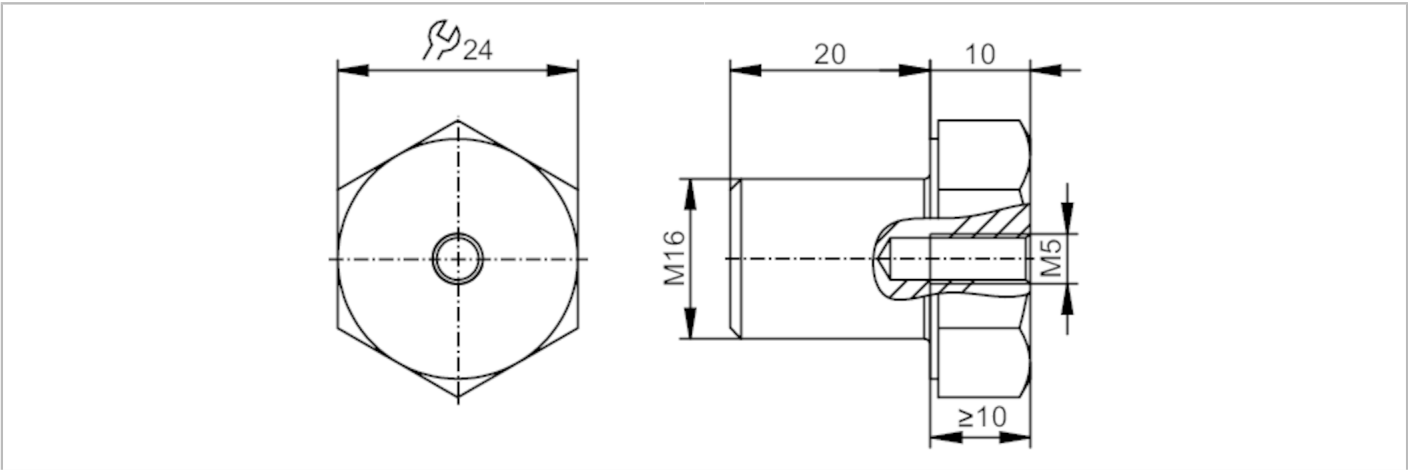


E30540



Mounting adapter

SCREW ADAPT M5-M16



Application	
Application	Accessories for vibration monitoring systems - Mounting adapters
Installation	M16 x 2
Mechanical data	
Weight [g]	61
Materials	stainless steel A2
Sensor connection	M5 x 0,8 internal thread
Remarks	
Pack quantity	1 pcs.