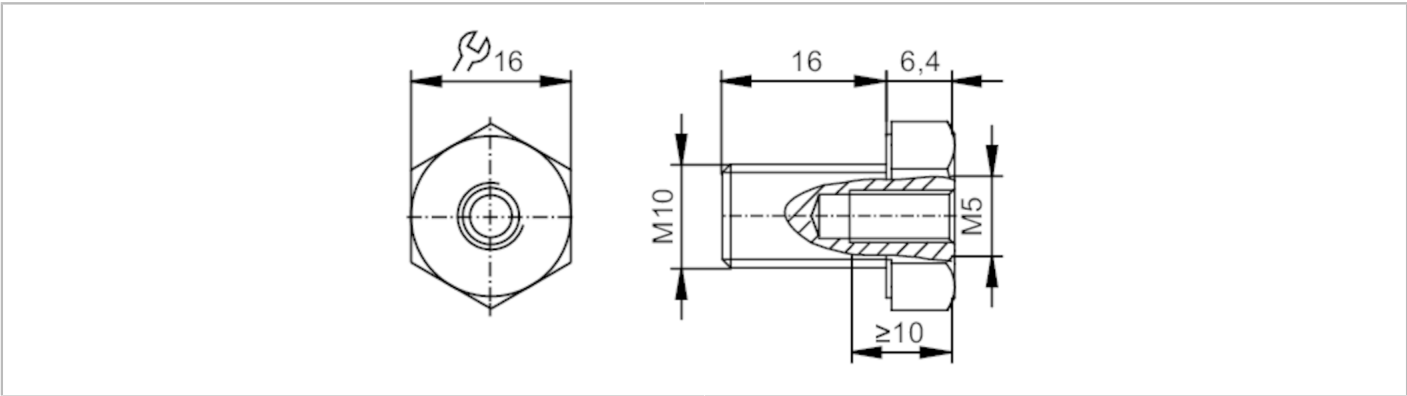


E30539



Mounting adapter

SCREW ADAPT M5-M10



Application		
Application		Accessories for vibration monitoring systems - Mounting adapters
Installation		M10 x 1,5
Mechanical data		
Weight	[g]	18.3
Materials		stainless steel A2
Sensor connection		M5 x 0,8 internal thread
Remarks		
Pack quantity		1 pcs.