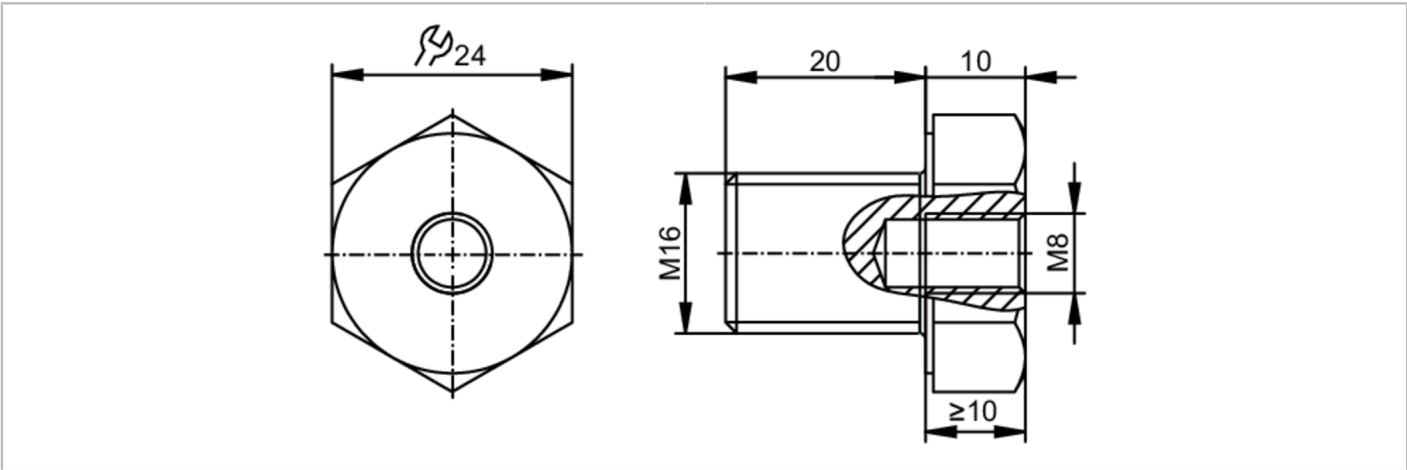


E30537



Mounting adapter

SCREW ADAPT M8-M16



Application	
Application	Accessories for vibration monitoring systems - Mounting adapters
Installation	M16 x 2
Mechanical data	
Weight [g]	57.95
Materials	stainless steel A2
Sensor connection	M8 x 1,25 internal thread
Remarks	
Pack quantity	1 pcs.