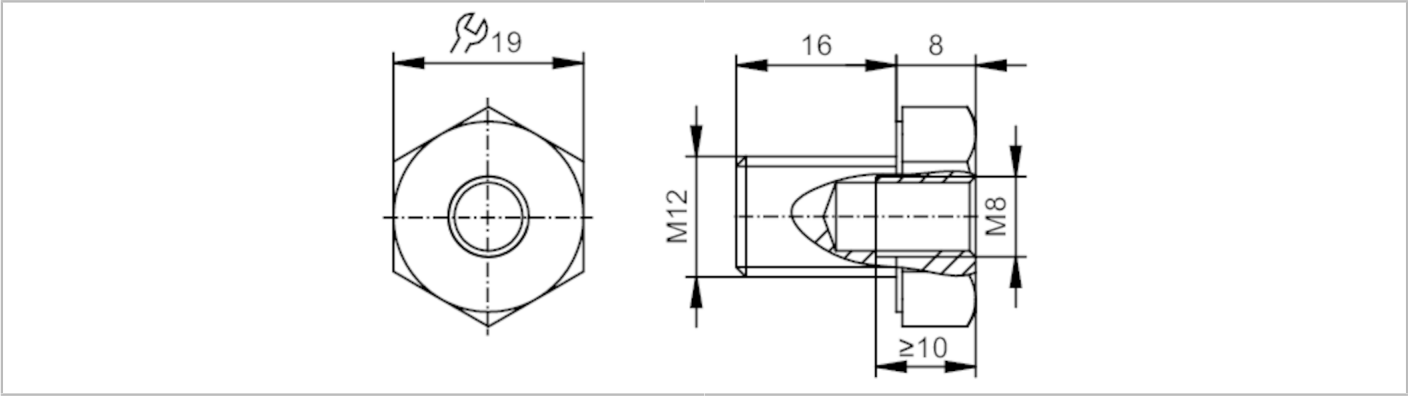


E30536



Mounting adapter

SCREW ADAPT M8-M12



Application	
Application	Accessories for vibration monitoring systems - Mounting adapters
Installation	M12 x 1,75
Mechanical data	
Weight [g]	23.55
Materials	stainless steel A2
Sensor connection	M8 x 1,25 internal thread
Remarks	
Pack quantity	1 pcs.