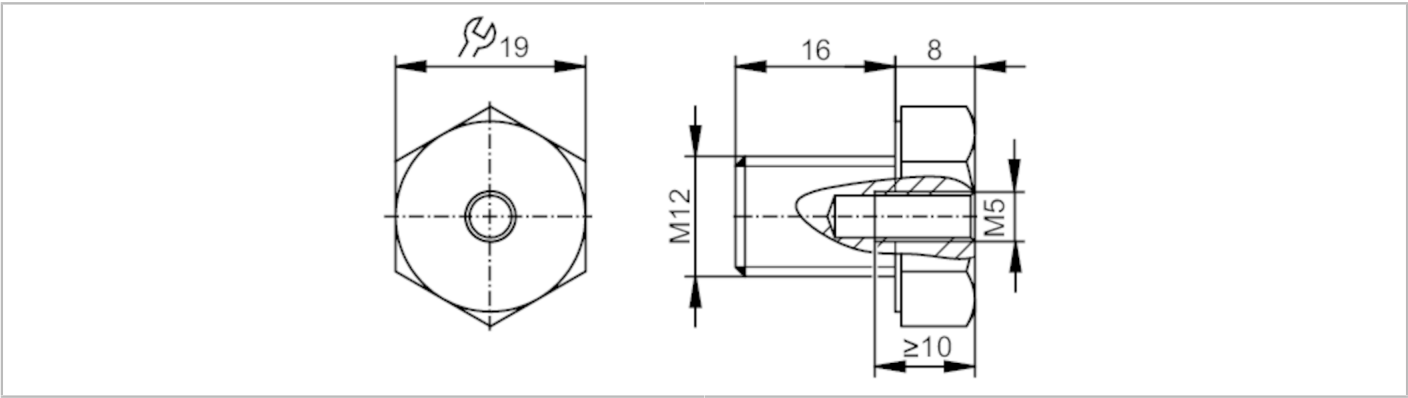


E30534



Mounting adapter

SCREW ADAPT M5-M12



| Application       |  |
|-------------------|--|
| Application       | Accessories for vibration monitoring systems - Mounting adapters |
| Installation      | M12 x 1,75   |
| Mechanical data   |  |
| Weight [g]        | 26.9   |
| Materials         | stainless steel A2   |
| Sensor connection | M5 x 0,8 internal thread   |
| Remarks           |  |
| Pack quantity     | 1 pcs.   |