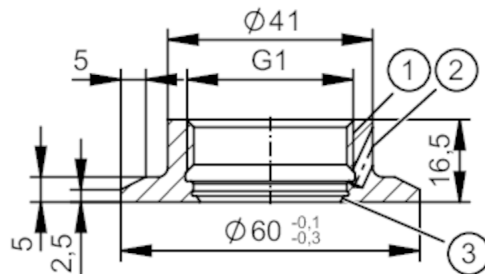




Welding adapter for process sensors

WELDING ADAPT D60/G1 LEAK PORT

recommended for wall thickness ≤ 3 mm. There are more suitable welding adapters for thicker walls.



- 1 G1 internal thread Aseptoflex Vario
- 2 Leakage port
- 3 sealing area



EC 1935/2004 EHEDG Certified



Application

Design	with leakage port
Installation	recommended for wall thickness ≤ 3 mm
Pressure rating [bar]	25
Note on pressure rating	for the connection sensor - adapter

Tests / approvals

Pressure Equipment Directive	A possible classification to PED depends on the application and has to be carried out by the user / operator.
Safety instructions	The compatibility between medium and product material has to be checked in all applications.

Mechanical data

Weight [g]	156
Materials (wetted parts)	stainless steel (316L/1.4435) surface characteristics: $R_a < 0,4 \mu\text{m}$ / $R_z = 4 \mu\text{m}$
Sensor connection	G 1 internal thread Aseptoflex Vario
Process connection	welding adapter Ø 60 mm
Sealing	Gasket

Accessories

Items supplied	O-ring: 1 x (24 x 2 mm), EPDM, FDA compliant, E30054
Accessories (optional)	O-ring: 1 x 24 x 2, FKM, FDA compliant, E30123
	Welding mandrel, E30452
	welding mandrel, water-cooled, E30532
	leak test, E30530
	grinding protection, E30160

Remarks

Notes	recommended for wall thickness ≤ 3 mm. There are more suitable welding adapters for thicker walls.
Pack quantity	1 pcs.