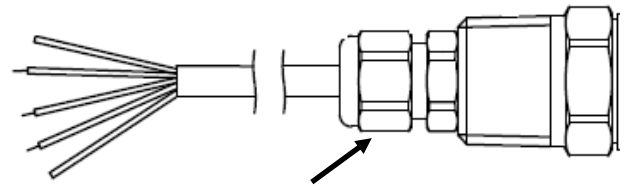


# CABLE

Electrical connection option “L, P, Z”



Strain Relief Optional  
Electrical option “Z”

## STANDARD MODELS

Output	Red	Black	Green	White
mV (4-wire)	+V	Ground	+Signal	-Signal
Voltage (3-wire)	+V	Ground	N/A	Signal
4-20mA (2-wire)	+V	-V	N/A	N/A

## SUBMERSIBLE MODELS

Output	Red	Black	Green	White
Voltage (3-wire)	+V	Ground	Case	Signal
4-20mA (2-wire)	+V	-V	Case	N/A

Note: All submersible pressure transducers come with a case ground wire

## CSA APPROVED MODELS

Output	Red	Black	Green	White	Drain
mV (4-wire)	+V	Ground	+Signal	-Signal	Case
Voltage (3-wire)	+V	Ground	Case	Signal	N/A
4-20mA (2-wire)	+V	-V	Case	N/A	N/A

+V	Supply Voltage
-V	4-20mA Signal/Electrical Ground
Ground	Voltage Electrical Ground
Signal	Voltage Output Signal
Case	Case / Earth Ground
N/A	Not Applicable

### WARNING! NOTICE FOR NON-INCENDIVE SENSORS:

Suitable for use in Class I, Division 2, Groups A, B, C, D hazardous locations and non-hazardous locations only.



**EXPLOSION HAZARD** - Do not disconnect equipment unless power has been switched off or the area is known to be non-hazardous.



**EXPLOSION HAZARD** - Substitution of components may impair suitability for Class I, Division 2.

### WARNING! NOTICE FOR INTRINSICALLY SAFE SENSORS:

Refer to the Intrinsically Safe Operating Instructions and/or product datasheet for barrier installation information.

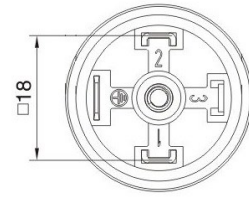


Thoroughly read and understand these wiring instructions prior to installation. **Please call Core Sensors at (862) 245-2673** if you are unsure about any of the instructions.



# DIN 43650, FORM A

Electrical connection option "F"



## STANDARD MODELS

Output	Pin 1	Pin 2	Pin 3	Wide Pin
mV (4-wire)	+Signal	Ground	+V	-Signal
Voltage (3-wire)	+V	Ground	Signal	N/A
4-20mA (2-wire)	+V	-V	N/A	N/A

+V	Supply Voltage
-V	4-20mA Signal/Electrical Ground
Ground	Voltage Electrical Ground
Signal	Voltage Output Signal
Case	Case / Earth Ground
N/A	Not Applicable

## CSA APPROVED MODELS

Output	Pin 1	Pin 2	Pin 3	Wide Pin
Voltage (3-wire)	+V	Ground	Signal	Case
4-20mA (2-wire)	+V	-V	Case	N/A

### WARNING! NOTICE FOR NON-INCENDIVE SENSORS:

Suitable for use in Class I, Division 2, Groups A, B, C, D hazardous locations and non-hazardous locations only.



**WARNING** **EXPLOSION HAZARD** - Do not disconnect equipment unless power has been switched off or the area is known to be non-hazardous.



**WARNING** **EXPLOSION HAZARD** - Substitution of components may impair suitability for Class I, Division 2.

### WARNING! NOTICE FOR INTRINSICALLY SAFE SENSORS:

Refer to the Intrinsically Safe Operating Instructions and/or product datasheet for barrier installation information.

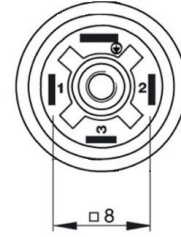


Thoroughly read and understand these wiring instructions prior to installation. **Please call Core Sensors at (862) 245-2673** if you are unsure about any of the instructions.



# MINI-DIN, FORM C

Electrical connection option “D”



## STANDARD MODELS

## CSA APPROVED MODELS

Intrinsically Safe Only

Output	Pin 1	Pin 2	Pin 3	Wide Pin
mV (4-wire)	-Signal	Ground	+V	+Signal
Voltage (3-wire)	Signal	Ground	+V	N/A
4-20mA (2-wire)	N/A	-V	+V	N/A

Output	Pin 1	Pin 2	Pin 3	Wide Pin
Voltage (3-wire)	Signal	Ground	+V	Case
4-20mA (2-wire)	N/A	-V	+V	Case

+V	Supply Voltage
-V	4-20mA Signal/Electrical Ground
Ground	Voltage Electrical Ground
Signal	Voltage Output Signal
Case	Case / Earth Ground
N/A	Not Applicable

### WARNING! NOTICE FOR INTRINSICALLY SAFE SENSORS:

Refer to the Intrinsically Safe Operating Instructions and/or product datasheet for barrier installation information.

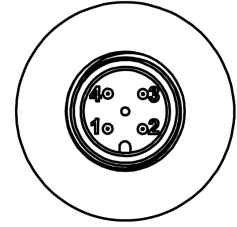


Thoroughly read and understand these wiring instructions prior to installation. **Please call Core Sensors at (862) 245-2673** if you are unsure about any of the instructions.



# M12x1 EUROFAST

Electrical connection option "A"



## STANDARD MODELS

Output	Pin 1	Pin 2	Pin 3	Pin 4
mV (4-wire)	+V	+Signal	-Signal	Ground
Voltage (3-wire)	+V	N/A	Ground	Signal
4-20mA (2-wire)	+V	N/A	-V	N/A

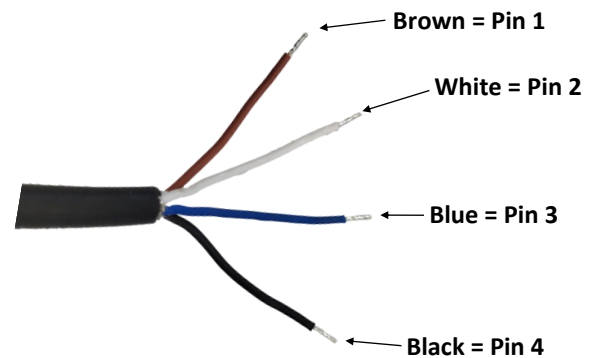
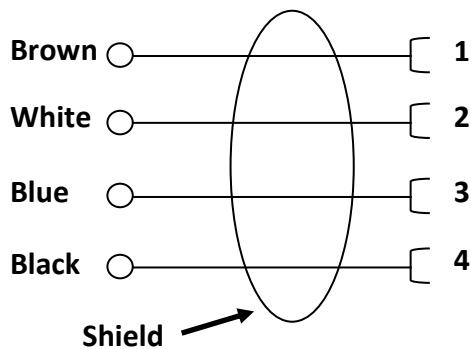
+V	Supply Voltage
-V	4-20mA Signal/Electrical Ground
Ground	Voltage Electrical Ground
Signal	Voltage Output Signal
Case	Case / Earth Ground
N/A	Not Applicable

## CSA APPROVED MODELS

Intrinsically Safe Only

Output	Pin 1	Pin 2	Pin 3	Pin 4
Voltage (3-wire)	+V	Case	Ground	Signal
4-20mA (2-wire)	+V	Case	-V	N/A

## Mating Cable Assembly Guide



**Note:** This guide is only for M12x1 mating cable assemblies purchased directly from Core Sensors. We cannot guarantee assemblies purchased from a third party will follow the same conductor/pin designations.

### WARNING! NOTICE FOR INTRINSICALLY SAFE SENSORS:

Refer to the Intrinsically Safe Operating Instructions and/or product datasheet for barrier installation information.

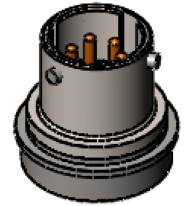
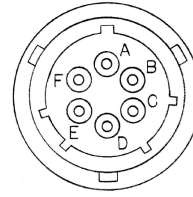


Thoroughly read and understand these wiring instructions prior to installation. **Please call Core Sensors at (862) 245-2673** if you are unsure about any of the instructions.



# 6-PIN BENDIX

Electrical connection option “G”



## STANDARD MODELS

Output	Pin A	Pin B	Pin C	Pin D	Pin E	Pin F
mV (4-wire)	+V	+Signal	-Signal	Ground	N/A	N/A
Voltage (3-wire)	+V	Signal	N/A	Ground	N/A	N/A
4-20mA (2-wire)	+V	-V	N/A	N/A	N/A	N/A

+V	Supply Voltage
-V	4-20mA Signal/Electrical Ground
Ground	Voltage Electrical Ground
Signal	Voltage Output Signal
Case	Case / Earth Ground
N/A	Not Applicable

## CSA APPROVED MODELS

Intrinsically Safe Only

Output	Pin A	Pin B	Pin C	Pin D	Pin E	Pin F
mV (4-wire)	+V	+Signal	-Signal	Ground	N/A	Case
Voltage (3-wire)	+V	Signal	N/A	Ground	N/A	Case
4-20mA (2-wire)	+V	-V	N/A	N/A	N/A	Case

**WARNING! NOTICE FOR INTRINSICALLY SAFE SENSORS:**

Refer to the Intrinsically Safe Operating Instructions and/or product datasheet for barrier installation information.

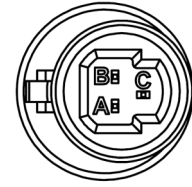


Thoroughly read and understand these wiring instructions prior to installation. **Please call Core Sensors at (862) 245-2673** if you are unsure about any of the instructions.



# PACKARD METRIPACK 150

Electrical connection option "C"



## STANDARD MODELS

Output	Pin A	Pin B	Pin C
Voltage (3-wire)	Ground	+V	Signal
4-20mA (2-wire)	-V	+V	N/A

## CSA APPROVED MODELS

Intrinsically Safe Only

Output	Pin A	Pin B	Pin C
4-20mA (2-wire)	-V	+V	Case

+V	Supply Voltage
-V	4-20mA Signal/Electrical Ground
Ground	Voltage Electrical Ground
Signal	Voltage Output Signal
Case	Case / Earth Ground
N/A	Not Applicable

### WARNING! NOTICE FOR INTRINSICALLY SAFE SENSORS:

Refer to the Intrinsically Safe Operating Instructions and/or product datasheet for barrier installation information.

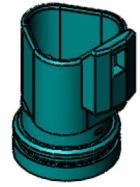
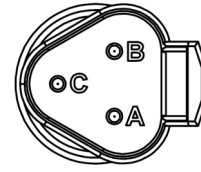


Thoroughly read and understand these wiring instructions prior to installation. **Please call Core Sensors at (862) 245-2673** if you are unsure about any of the instructions.



# DEUTSCH DT04-3P

Electrical connection option “E”



## STANDARD MODELS

Output	Pin A	Pin B	Pin C
Voltage (3-wire)	+V	Ground	Signal
4-20mA (2-wire)	+V	-V	N/A

+V	Supply Voltage
-V	4-20mA Signal/Electrical Ground
Ground	Voltage Electrical Ground
Signal	Voltage Output Signal
Case	Case / Earth Ground
N/A	Not Applicable

## CSA APPROVED MODELS

Intrinsically Safe Only

Output	Pin A	Pin B	Pin C
4-20mA (2-wire)	+V	-V	Case

### WARNING! NOTICE FOR INTRINSICALLY SAFE SENSORS:

Refer to the Intrinsically Safe Operating Instructions and/or product datasheet for barrier installation information.

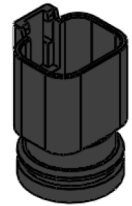
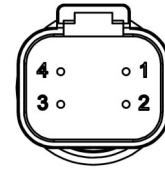


Thoroughly read and understand these wiring instructions prior to installation. **Please call Core Sensors at (862) 245-2673** if you are unsure about any of the instructions.



# DEUTSCH DT04-4P

Electrical connection option “B”



## STANDARD MODELS

Output	Pin 1	Pin 2	Pin 3	Pin 4
mV (4-wire)	+V	Ground	+Signal	-Signal
Voltage (3-wire)	+V	Ground	Signal	N/A
4-20mA (2-wire)	+V	-V	N/A	N/A

<b>+V</b>	Supply Voltage
<b>-V</b>	4-20mA Signal/Electrical Ground
<b>Ground</b>	Voltage Electrical Ground
<b>Signal</b>	Voltage Output Signal
<b>Case</b>	Case / Earth Ground
<b>N/A</b>	Not Applicable

## CSA APPROVED MODELS

Intrinsically Safe Only

Output	Pin 1	Pin 2	Pin 3	Pin 4
Voltage (3-wire)	+V	Ground	Signal	Case
4-20mA (2-wire)	+V	-V	N/A	Case

**WARNING! NOTICE FOR INTRINSICALLY SAFE SENSORS:**

Refer to the Intrinsically Safe Operating Instructions and/or product datasheet for barrier installation information.



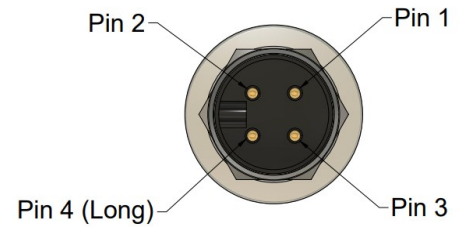
Thoroughly read and understand these wiring instructions prior to installation. **Please call Core Sensors at (862) 245-2673** if you are unsure about any of the instructions.





# TURCK® MINI-FAST®

Electrical connection option “H”



## CSA APPROVED MODELS

Output	Pin 1	Pin 2	Pin 3	Pin 4
Voltage (3-wire)	Signal	+V	Case	Ground
4-20mA (2-wire)	-V	+V	N/A	Case

+V	Supply Voltage
-V	4-20mA Signal/Electrical Ground
Ground	Voltage Electrical Ground
Signal	Voltage Output Signal
Case	Case / Earth Ground
N/A	Not Applicable

### WARNING! NOTICE FOR NON-INCENDIVE SENSORS:

Suitable for use in Class I, Division 2, Groups A, B, C, D hazardous locations and non-hazardous locations only.

**WARNING** **EXPLOSION HAZARD** - Do not disconnect equipment unless power has been switched off or the area is known to be non-hazardous.

**WARNING** **EXPLOSION HAZARD** - Substitution of components may impair suitability for Class I, Division 2.

### WARNING! NOTICE FOR INTRINSICALLY SAFE SENSORS:

Refer to the Intrinsically Safe Operating Instructions and/or product datasheet for barrier installation information.



Thoroughly read and understand these wiring instructions prior to installation. **Please call Core Sensors at (862) 245-2673** if you are unsure about any of the instructions.



# TURCK® LOKFAST® M12

Electrical connection option “Y”

## CSA APPROVED MODELS

Output	Pin 1	Pin 2	Pin 3	Pin 4
Voltage (3-wire)	+V	Case	Ground	Signal
4-20mA (2-wire)	+V	Case	-V	N/A

+V	Supply Voltage
-V	4-20mA Signal/Electrical Ground
Ground	Voltage Electrical Ground
Signal	Voltage Output Signal
Case	Case / Earth Ground
N/A	Not Applicable

### WARNING! NOTICE FOR NON-INCENDIVE SENSORS:

Suitable for use in Class I, Division 2, Groups A, B, C, D hazardous locations and non-hazardous locations only.



**EXPLOSION HAZARD** - Do not disconnect equipment unless power has been switched off or the area is known to be non-hazardous.



**EXPLOSION HAZARD** - Substitution of components may impair suitability for Class I, Division 2.

### WARNING! NOTICE FOR INTRINSICALLY SAFE SENSORS:

Refer to the Intrinsically Safe Operating Instructions and/or product datasheet for barrier installation information.



Thoroughly read and understand these wiring instructions prior to installation. **Please call Core Sensors at (862) 245-2673** if you are unsure about any of the instructions.

