

# UVC1000 / UVC1010

## Vacuum Generator/Pressure Controller



UVC1000

**Please refer to price schedule for part numbers and part numbering guide.**

Rugged, versatile, portable...the UVC1000 vacuum generator/pressure controller packs a lot of performance into one affordable instrument. Our 19 inch rack-mount UVC1010 is great for applications where portability is not as important.

Complete mechanical operation allows operators to utilize the UVC1000 in areas that are off limits to vacuum pumps. This efficient unit contains a built-in vacuum converter that works with existing shop air to power up to 29 inches of Hg vacuum. As a result, the UVC1000 eliminates fumes and vibrations that are dangerous in nuclear power plants, oil refineries, and other hazardous environments.

Regardless of the location, the UVC1000 is convenient for on-the-go operation. Its lightweight structure and compact design provide quick and convenient performance. This versatile unit can also be used to control and regulate positive pressure.

The UVC1000/UVC1010...the ideal source for vacuum and pressure control in an endless number of applications and locations.

### Applications

- Hazardous environments
- Source for calibration of compound gauges
- Low-cost alternative to vacuum pump
- Need for precise vacuum or pressure control

### Standard Features

- 2 modes of operation: vacuum or pressure
- 29 inches Hg vacuum from shop air supply
- Lightweight design
- Built-in vacuum converter and pressure regulator
- Available as standard (UVC1000) or 19 inch wide rack-mount version (UVC1010)

### Options/Accessories

- 55281 .....5 ft. long hose with quick-disconnect plug (brass) on one end and 1/4 in. 37° female AN swivel tube coupling on the other end
- 69481 .....Additional operating and maintenance manual
- 60195 .....Quick-disconnect hose fitting male coupling body to 1/4 in. NPT female (brass)



UVC1010, 19 inch Rack-Mount

**PRESSURE MEDIA:**

Filtered shop air

**PRESSURE INPUT:**

100-160 psi\*, 4.2 SCFM, AN-4 37° flared tube setting

**PRESSURE LIMIT MONITOR GAUGE:**

Size: Two-inch diameter

Range: 0-160 psi

**VACUUM MONITOR GAUGE:**

Size: Two-inch diameter

Range: 0-30 inches Hg

**REGULATOR:**

Aluminum/brass 0-100 psi output pressure

**UVC1000 CASE:**

16 gauge painted steel

**PRESSURE/VACUUM SELECTOR:**

Brass

**FITTINGS:**

Brass, quick-disconnect, 1/4 in.

**INTERNAL TUBING:**

250 psi rated tubing

**WEIGHT:**

UVC1000: 6.6 lb (2.9 kg)

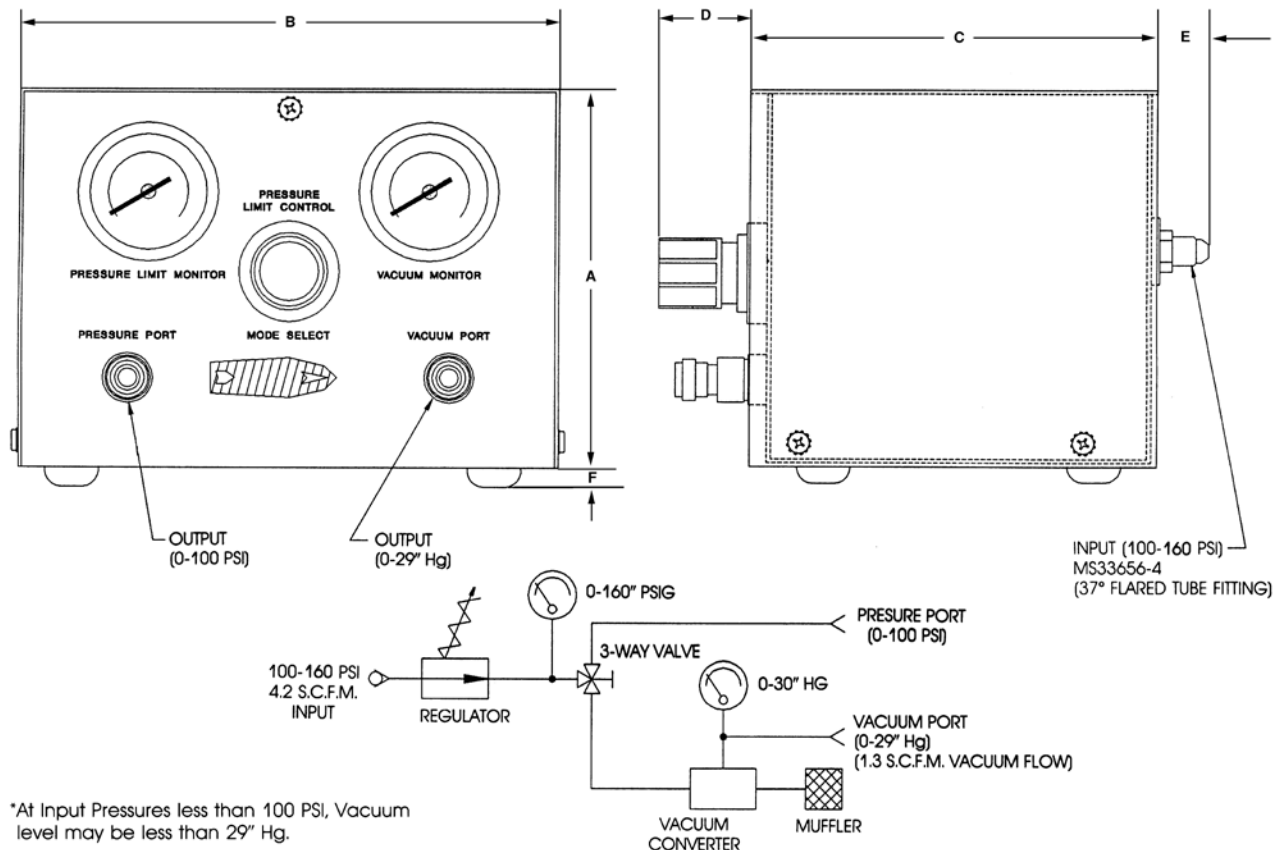
UVC1010: Approximately 7 lb (3 kg)

\* At input pressures less than 100 psi, vacuum level may be less than 29 inches Hg.

**UVC1000 DIMENSIONS**

A = 5.70 in. (144.78mm)	D = 1.30 in. (33.02 mm)
B = 8.14 in. (206.75mm)	E = 0.80 in. (20.32 mm)
C = 6.10 in. (154.94mm)	F = 0.30 in. (7.62 mm)

Consult factory for UVC1010 dimensions.



\*At Input Pressures less than 100 PSI, Vacuum level may be less than 29" Hg.