

CI Bimetal Thermometer

FEATURES

- Hermetically sealed case to prevent entry of moisture, interior corrosion and coil freeze up
- Maxivision® dial for precise readings (minimize parallax reading errors)
- Silicone dampened coil for reduction of pointer flutter on high vibration applications and provides improved response times
- Customized dial printing

TYPICAL USES

- General Industrial
- HVAC
- Equipment Skids
- Pharmaceutical / Biotech
- Food and Beverages



CI Bimetal
2", 3", 5" dial sizes



SPECIFICATIONS

Accuracy:	±1% of span ASME B40.200 (B40.3 Grade A)	
Stem Length:	2½" to 24"	
Dial Sizes:	2", 3", 5"	
Dial Style:	Maxivision®, black figures on white background	
Overtemperature Limits:	Top of Range °F up to 250 251-550 551-1,000	Max. Over Temperature 100% of span 50% of span 800°F ⁽¹⁾

⁽¹⁾ Satisfactory for continuous service up to 800°F (425°C). Can be used for intermittent service from 800 to 1,000°F (425 to 500°C). Use Ashcroft Duratemp® thermometers for ranges above and below those listed above.

Process Connection:	Plain, Pointed Stem, ¼ NPT, ½ NPT
Stem diameter:	0.250", .375"
Case & Stem:	304 SS, Hermetically sealed
Process Connection Location:	2": Rear 3", 5": Lower, rear
Pointer:	Black
Window:	Glass, Acrylic, Safety Glass
Approvals:	RoHS

KEY BENEFITS

- Tamper resistant case
- NEMA 4X/IP66 protection
- 5-year limited warranty
- All welded stainless steel construction

MIN/MAX TEMPERATURE LIMITS

Version	Ambient
Dry	-40°F to 200°F (-40°C to 93°C)

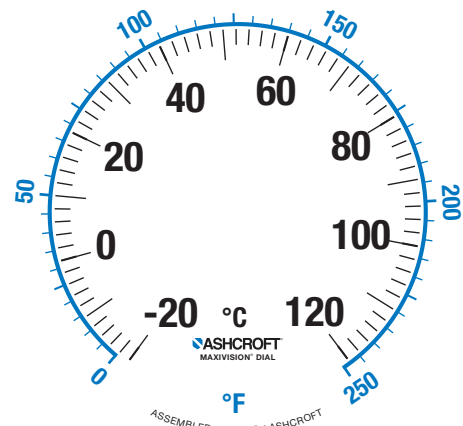
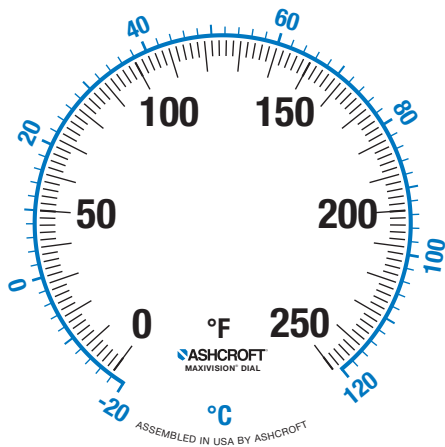
Data Sheet

CI Bimetal Thermometer

ORDERING CODE	Example:	30CI	60	R	060	0/200°F	XSG
Dial Size and Model							
20CI - 2" Tamper resistant bimetal							
30CI - 3" Tamper resistant bimetal		30CI					
50CI - 5" Tamper resistant bimetal							
Stem and Connection							
40 - Plain - no connection							
50 - Pointed stem - no connection (2" case only)							
60 - ½ Fixed NPT for 3" & 5" but ¼ fixed NPT for 2"			60				
Connection Location							
R - Rear connection				R			
L - Lower connection (Not available on 2" case)							
Stem Length (Consult factory for custom or longer stem length)							
025 - 2½"							
040 - 4"							
060 - 6"					060		
090 - 9"							
120 - 12"							
150 - 15"							
180 - 18"							
240 - 24"							
Temperature Ranges (see table on page 3)							
0/200°F						0/200°F	
Options - (if choosing an option(s) must include an "X")							
CS - Dual scale							X_ _
DM - Dial marking							
NH - SS tag							
PD - Plastic window							
SG - Shatterproof glass							SG
C4 - Individual calibration certification							
S1 - Silicone free							
3B - ¾" stem diameter with ½ NPT							
02 - ¼ NPT (only available on rear connection)							

Data Sheet

CI Bimetal Thermometer



Fahrenheit Inner Range			
Inner °F	Outer °C	Restrictions	
-100/100	-70/40		
-80/120	-60/50		
-50/200	-40/93		
-50/250	-40/120		
Can be liquid filled	-40/120	-40/50	
	-40/160	-40/70	
	-20/120	-30/50	
	0/100	-20/40	
	0/150	-20/65	
	0/200	-20/93	
	0/250	-20/120	
	0/300	-20/150	
	0/350	-20/170	
	0/500	-20/260	
	20/120	-5/50	4" Min for Everyangle™ and Lowers only
	30/130	0/55	4" Min for Everyangle™ and Lowers only
	30/240	0/115	
	50/300	10/150	
	50/400	10/200	
	50/550	10/290	
0/700	-20/370	4" minimum	
100/800	50/430	4" minimum	
150/750	65/395	4" minimum	
200/700	100/370	4" minimum	
200/1000	100/550	4" minimum Satisfactory continuous service from 800° F or 426° C Intermittent service from 800° to 1000° F or 425° C to 500° C	

Celsius Inner Range			
Inner °C	Outer °F	Restrictions	
-50/50	-50/120		
-50/180	-50/350		
Can be Liquid filled	-40/100	-40/210	
	-40/160	-40/320	
	-30/70	-20/160	
	-20/180	0/350	
	-20/120	0/250	
	-10/50	20/120	
	-10/110	20/230	
	0/60	30/140	
	0/100	30/210	
	0/120	30/250	
	0/150	30/300	
	0/200	30/400	
	0/250	30/480	
	0/300	30/570	
	10/150	50/300	
	0/400	30/750	4" minimum
0/500	30/390	4" minimum	
50/450	120/840	4" minimum Satisfactory continuous service from 800° F or 426° C Intermittent service from 800° to 1000° F or 425° C to 500° C	
100/500	220/930	4" minimum Satisfactory continuous service from 800° F or 426° C Intermittent service from 800° to 1000° F or 425° C to 500° C	

CI Bimetal Thermometer

DIMENSIONS in [] are millimeters

For reference only, consult Ashcroft for specific dimensional drawings

Dial Size (Inches)	Process Connection Locations	A	B	C	D	E	S	NPT	Hex.	Weight (oz) ⁽¹⁾ S - 2 1/2"
2	Rear (Plain)	2 ³ / ₃₂ [53]	3/8 [10]	3/8 [10]			(2)		1 ¹ / ₁₆	4 1/2
2	Rear (Plain, pointed stem)	2 ³ / ₃₂ [53]	3/8 [10]	3/8 [10]			(2)		1 ¹ / ₁₆	4 1/2
2	Rear (Threaded)	2 ³ / ₃₂ [53]	3/8 [10]	3/8 [10]			(2)	1/4	1 ¹ / ₁₆	4 1/2
3	Rear	3 ⁵ / ₃₂ [80]	1 ⁹ / ₃₂ [15]	3/8 [10]			(2)	1/2	7/8	7
3	Lower	3 ⁵ / ₃₂ [80]	1 ²⁷ / ₃₂ [47]		2 ⁵ / ₈ [67]	1/4 [6]	(2)	1/2	7/8	11
5	Rear	5 ¹ / ₃₂ [128]	2 ³ / ₃₂ [18]	3/8 [10]			(2)	1/2	7/8	16
5	Lower	5 ¹ / ₃₂ [128]	1 ¹⁵ / ₁₆ [49]		3 ⁵ / ₈ [92]	1/4 [6]	(2)	1/2	7/8	26

NOTES:

1. Add 1 oz. for every 2" inches of stem length
2. "S" dimensions are 2 1/2, 4, 6, 9, 12, 15, 18 and 24" (STD.). Stem diameter is 1/4" (STD.)

