



# 4Sight2

## Calibration and asset management software

- 4Sight2 is the next generation calibration and asset management software that provides full visibility of all your assets, reference standards and resources on your plant.
- Complete integration with Druck calibration equipment automates field activities and minimizes manual intervention without compromising on quality, compliance and data integrity.
- Automatic workload scheduling and planning, status tracking, configuration capabilities based on individual needs, track and trace calibrations, historical trending and drift analysis features provide a robust solution to drive process efficiency and time saving.
- Easy to use, simple layout packed with customization capabilities offer highly flexible and adaptable solution suitable for a wide range of user groups such as technicians, site supervisors, managers spanning across single or multiple sites or geographies.
- Web browser-based design allows you to access data anytime, anywhere eliminating the need for maintaining and managing paper-based records.

### Features

#### Asset and test equipment management

- Create comprehensive asset and test equipment database
- Create comprehensive factory hierarchy (plant, location, tag, device, range)
- Hierarchical or tabular visualization of data

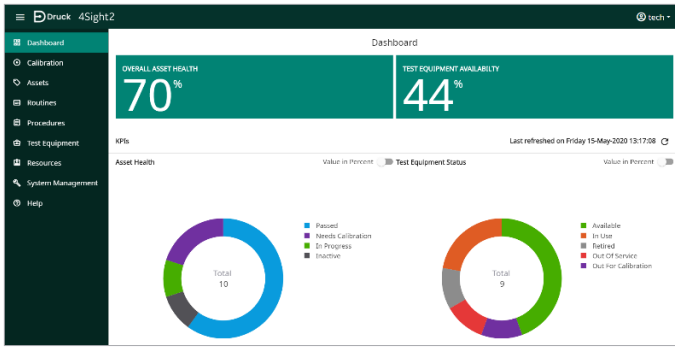
- Customizable data grids
- Export data to standard file formats
- Configuration policies

#### Calibration management

- Automates calibration when integrated with the latest Druck workshop or documenting portable pressure, temperature and electrical calibrators
- Manual entry of calibration data
- Uncertainty calculation for added industry standard compliance
- Easy access to calibration history
- Automatic calibration scheduling and workload management

#### Reporting and analysis

- Customization calibration certificate service
- Reverse trace report for tracing calibrations associated with a reference standard
- Historical trending and drift analysis graph for interval analysis and predictive maintenance



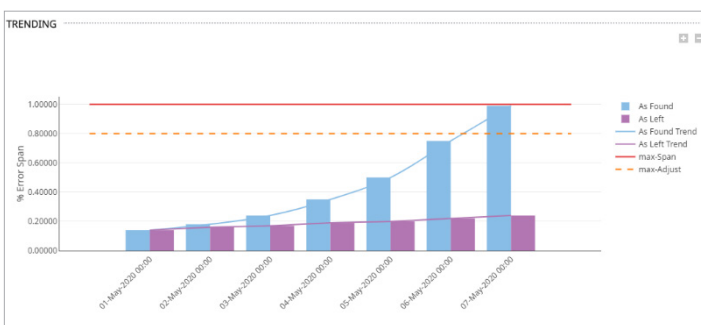
- New **improved look** and **simplified navigation**
- Improved reference standard **status tracking and management**
- **Automatic calibration workload scheduling**
- Improved **communications engine**
- Quick and easy **express installation**
- Integrated with Druck temperature calibrator DryTC165/650, LiquidTC165/650 and others



- **Uncertainty calculation** provides additional confidence for calibration data in accordance with industry standards
- The **traceability report** enables speedy investigation of historical calibrations done with a reference standard thereby facilitating corrective actions

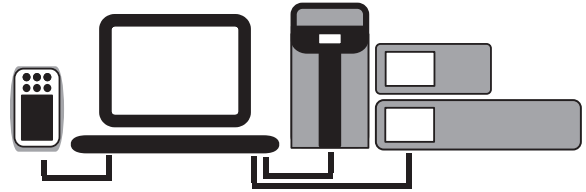
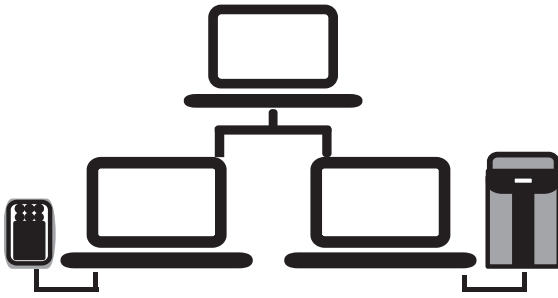
Equipment Name	Model	Manufacturer	Serial Number	Status	Cal Status	Calibration Due
DP9620G	DP9620G	Druck	121348	In Use	On Time	30-Sep-2020
ESM01	Gas Bottle Nitrogen	SMA	122315	In Use	On Time	30-Nov-2020
DP9620G	DP9620G	Druck	3812145	Available	On Time	15-Sep-2020
PACE5000 CH	PACE5000	Druck	105049	Available		N/A
CM2-11G	PACE CM2-11G (CM2-B-11G)	Druck	425359	Available	Overdue	01-Sep-2017
DP9620G	DP9620G	Druck	5264861	Available	Overdue	30-Jan-2020
DP9620Gcopy37	DP9620G	Druck	424957	Out Of Service	On Time	30-Sep-2020
DP9620Gcopy38	DP9620G	Druck	216478	Out For Calibration	On Time	30-Sep-2020
DP9620Gcopy39	DP9620G	Druck	688795	Retired	On Time	30-Sep-2020
PACE5000 CH	PACE5000	Druck	1314525	Available		N/A
CM0-07G	PACE CM0-07G (CM0-B-07G)	Druck	1214915	Available	On Time	15-May-2021
DP9612	DP9612	Druck	1264654	Available	On Time	14-May-2021
DryTC165	DryTC165C	Druck	9471347	Available	On Time	15-May-2021

- **Custom view** feature provides the ability to show/hide, sort, re-order and filter tabular data based on your requirement. Once done, you can save the configuration and **export** the data in standard file format.
- **Customizable report service** allows you to create bespoke looking certificates using our brand-new reports engine.
- **User configurable policies** allow you to customize key behaviors.



- **Improved visualization and data representation** for better decision making
- **Historical trending** of drift data for interval analysis and predictive decision making
- Improved **paperless experience** while in field

## Minimum system requirements



### Application server

- Windows 10, Windows Server 2012 R2, Windows Server 2016, Windows Server 2019
- All Windows Updates fully installed
- Quad core processor
- 8GB or greater (32GB recommended)
- 1 TB disk space or greater

### Client workstation

- Windows 10, Windows Server 2012 R2, Windows Server 2016, Windows Server 2019
- Google Chrome V80+, Microsoft Edge V80, Firefox V74
- Adobe Acrobat Reader DC Version 2015.017.20050 +
- 8GB or greater

### Standalone PC/installation

- Windows 10, Windows Server 2012 R2, Windows Server 2016, Windows Server 2019
- Google Chrome V80+, Microsoft Edge V80, Firefox V74
- Adobe Acrobat Reader DC Version 2015.017.20050 +
- 16GB or greater (32GB recommended)
- Dual core processor
- 500GB or greater disk space

## Get your copy of 4Sight2



### Download

1. Visit [4Sight2 web page](#)
2. Click [download free trial](#)
3. Enter contact details
4. Click [download](#)



### Install

1. Extract package
2. Execute [4Sight2ExpressSetup.exe](#)



### Start using

- Launch desktop icon and enjoy!**  
(for best results use Google Chrome)

For installation queries and other technical support, contact us at [drucktechsupport@bakerhughes.com](mailto:drucktechsupport@bakerhughes.com)

## Flavors and features

Features		Lite as Freemium	Standard	Advanced
Users	Concurrent or floating OR Single user license	1 (max 3)*	3 (no-limit)*	5 (no-limit)*
* Registered users in one database		3	5	8
Tags		100	2000	5000
Manual calibration		✓	✓	✓
Portable calibration		✓	✓	✓
Real time pressure calibration		-	Either	✓
Real time temperature calibration		-		✓
Customizable report		-	✓ (2 templates)	✓ (5 templates)
Measurement uncertainty calculation		-	✓	✓
Global policies		-	✓	✓
Customizable view		-	✓	✓
Customizable view export report		-	✓	✓
Trend and drift analysis graph		-	✓	✓
Calibration graph certificate		-	✓	✓
Test equipment calibration		-	-	✓
Gas calibration		-	-	✓

Note: Lite as freemium is only available with expert and elite druck portable calibrator range.

## Part numbers

Part numbers	Description
4SIGHT2-LIT	Lite license, see above for full specifications
4SIGHT2-STD	Standard license included with all portable callibrators, see above for full specifications
4SIGHT2-ADV	Advanced license, see above for full specifications
4SIGHT2-ADDT	Additional 1000 tags
4SIGHT2-ADDU	Additional ONE user license
4SIGHT2-DATA-MIG	Data migration (daily rate for application engineer)
4SIGHT2-REP-TEM	Additional ONE customized calibration certificate
4SIGHT2-MAIN-ADHOC	Ad-hoc hourly maintenance (daily rate for application engineer)
4SIGHT2-TRAIN-STD	Standard training package (daily rate for application engineer)
4SIGHT2-TL-EXTRA	Travel and living expenses for on-site visits



## Order now

Request a quotation and state the quotation number when ordering.

Advise your requirements as follows:

1. Flavor type [Lite/Standard/Advanced]
2. Any extra add-ons such as Trainings, Additional Users, Tags, etc.

**For more information please visit our website: [druck.com](http://druck.com), or contact your local Druck sales representative.**

## Related products

### Process calibrators

We offer a comprehensive range of portable pressure, temperature and electrical field calibrators. To help you select the right process calibration tools we have categorized our products into three ranges:

- The **Essential** range provides rugged, accurate and easy-to-use test and calibration tools
- The **Expert** range introduces higher accuracy and more functionality
- The **Elite** range provides a modular system offering state-of-the-art multifunction communication and calibration



## Laboratory and workshop instruments

Our PACE series offers a comprehensive range of pressure controllers and indicators.

Our Dry/Liquid temperature calibrator range offers and high accuracy solution to temperature calibration measurement.



## Pressure transducers and transmitters

We offer a wide range of pressure transducers and transmitters including analog, digital and HART/Smart devices. Please contact Druck for further information.

### 4Sight2 from Druck

Simple, scalable, and smart

Calibration and asset management software that works for you.



### EMEA

[sensing.grobycc@bakerhughes.com](mailto:sensing.grobycc@bakerhughes.com)

### Australia

[custcare.au@bakerhughes.com](mailto:custcare.au@bakerhughes.com)

### Americas

[CCpressureUSA@bakerhughes.com](mailto:CCpressureUSA@bakerhughes.com)

### Rest of the World

[sensing.grobycc@bakerhughes.com](mailto:sensing.grobycc@bakerhughes.com)

**Baker Hughes**