

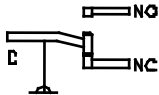
B700-Series Wiring Diagram

Switch Element

IT	QTY	PART NO.	DESCRIPTION	MATERIAL	FINISH	DWG NO.
1	1	-	TERMINAL NOTATION	-	-	70A1594

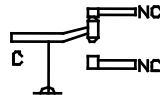
SINGLE POLE DOUBLE THROW

ACTUATES ON INCREASING PRESSURE



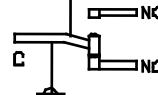
SINGLE POLE DOUBLE THROW

RESETS ON DECREASING PRESSURE AFTER INITIAL ACTUATION ON INCREASING PRESSURE



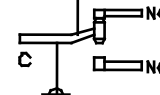
DOUBLE POLE DOUBLE THROW

ACTUATES ON INCREASING PRESSURE



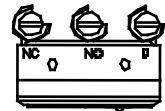
DOUBLE POLE DOUBLE THROW

RESETS ON DECREASING PRESSURE AFTER INITIAL ACTUATION ON INCREASING PRESSURE

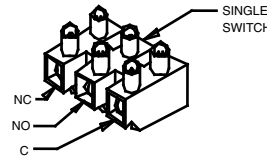
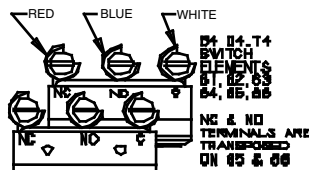
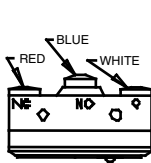


B4, D4, T4, B7, D7, T7 SWITCH ELEMENTS 20, 21, 24, 25, 26, 27, 28

NC & NO TERMINALS ARE TRANSPOSED ON ELEMENTS 21 & 25



B4, D4, T4 SWITCH ELEMENT 23



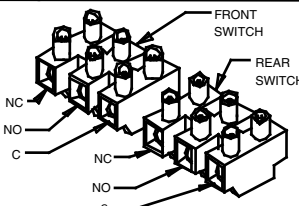
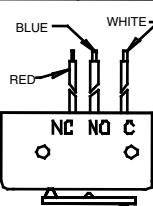
B7, D7, T7 SWITCH ELEMENTS {XK3 VARIATION} 20, 21, 22, 23, 24, 25, 26, 27, 32, 42, 50

SUPPLY WIRES ARE ATTACHED TO TERMINAL BLOCKS

MANUAL RESET B4, D4, T4 SWITCH ELEMENT 20 ACTUATES ON INCREASING PRESSURE



B4, D4, T4 B7, D7, T7 SWITCH ELEMENTS 22, 32, 42 DUAL ELEMENTS ARE 67, 68, 71



B7, D7, T7 SWITCH ELEMENTS 61, 62, 63, 64, 65, 66 67 68 70 71 72

SUPPLY WIRES ARE ATTACHED TO TERMINAL BLOCKS

SWITCH ELEMENT WIRING DIAGRAM

B4, D4, T4, B7, D7, T7

C			S	DRAWN	GCL	11-22-93
				CHECKED		
				APPROVED		
SCALE				70A1594		REV
-						F

F	6762	REDRAWN, ADDED XK3 VIEW	GCL	11-22-93
REV	C/N	DESCRIPTION	BY	DATE