

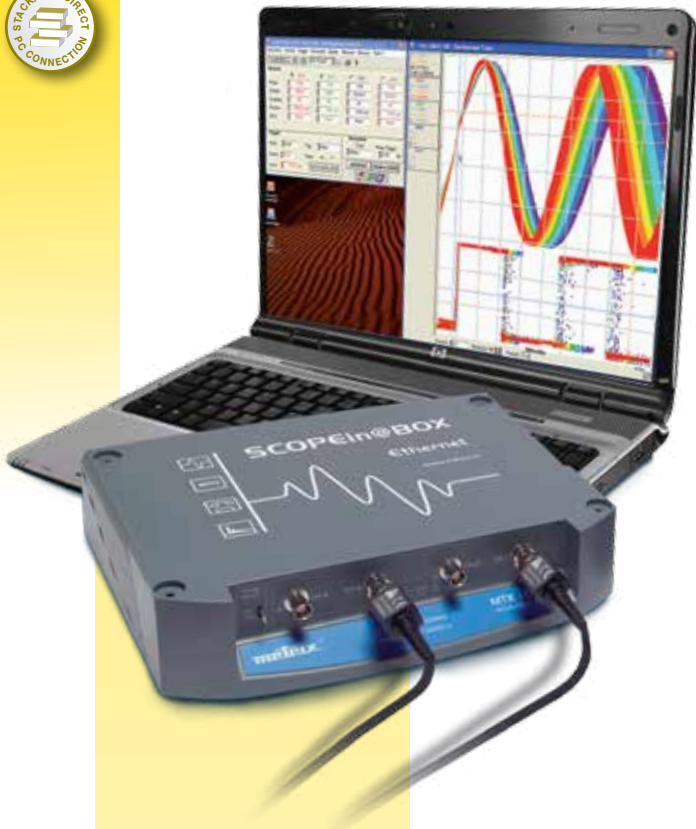
Special product features

# OTHER PRODUCTS FROM CHAUVIN ARNOUX® GROUP

## PC Oscilloscopes

### Model MTX 162

Compact, lightweight and stackable, these instruments can be connected directly to a PC via USB or Ethernet

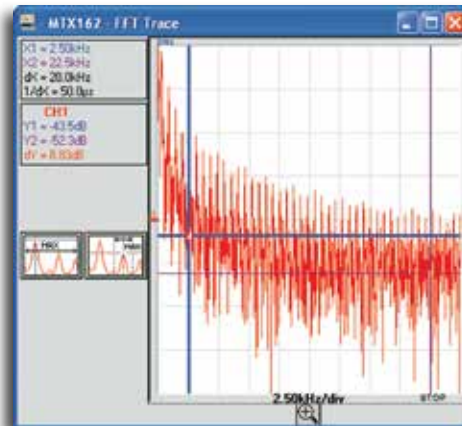


Connect and view results directly from your PC computer

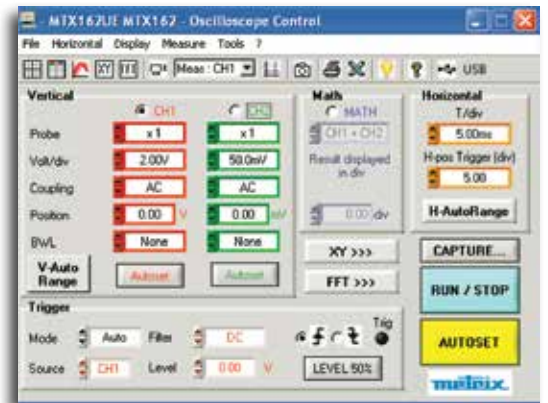


### SPECIFICATIONS

<b>MODEL</b>	<b>MTX 162</b>
<b>INTERFACE</b>	
Screen Specifications	Color PC screen (min. resolution: 1024 x 768)
Display Mode	8 x 10 div.- Multi-windowing (control panel, trace, zoom, FFT, etc.)
Traces on Screen	4 traces + 4 references
Screen Control	Windows-like & online help; All commands available via mouse
<b>VERTICAL</b>	
Vertical Sensitivity	5mV to 100V/div
Bandwidth	60MHz (bandwidth limiter: 15MHz, 1.5MHz or 5kHz)
Channels	2 channels, class 1, common ground
<b>HORIZONTAL</b>	
Time Base Speed	32 ranges from 5ns to 100s/div
<b>TRIGGER</b>	
Mode	Auto, Triggered, One-shot ROLL, Auto-level at 50%
Source	CH1, CH2, Line
Type	Rising or falling edge, adjustable pretriggering from 0 to 100%
<b>DIGITAL MEMORY</b>	
Max. Sampling Speed	Repetitive = 20GS/s; One-shot = 50MS/s
Vertical Resolution	8 bits
Memory Capacity	Depth = 50,000 points – storage capacity depends on PC configuration used
<b>COMMUNICATION</b>	
Software	PC operating software and LabWindows/LabView drivers (included)
<b>SPO (SMART PERSISTENCE OSCILLOSCOPE)</b>	
Duration of Persistence	Analog remanent mode
<b>MEASUREMENT PROCESSING</b>	
FFT Analyzer/MATH Functions	FFT, +, -, x, /
Manual Cursors	dv, dt, 1/dt, phase – cursors linked or unlinked to trace
Automatic Measurements	2 or 19 measurements out of 19 + automatic phase on/any type of curve markers and limits
<b>RECORDER MODE</b>	
Duration/Sampling	Dedicated ROLL mode from 2s to 33min



Real-time trace



Typical PC setup screen

CATALOG NO.	DESCRIPTION
2150.14	PC Scope Module Model MTX 162UE (2-Channel, 60MHz)
2150.15	PC Scope Module Model MTX 162UEW (2-Channel, Wi-Fi, 60MHz)



## Models MTX 1052 & MTX 1054

Browse through  
Chauvin Arnoux's  
Metrix® Test &  
Measurement Catalog



### ► FEATURES

- 2-channel/60MHz (Model MTX 162 software only)
- 2- & 4-channel models/150MHz (Models MTX 1052 & MTX 1054)
- Oscilloscope with FFT and recorder
- Harmonic analyzer (Models MTX 1052 & MTX 1054)
- Sampling rate 50MS/s in one-shot mode and 20GS/s in ETS mode (Model MTX 162)
- Sampling rate 200MS/s in one-shot mode and 100GS/s in ETS mode (Models MTX 1052 & MTX 1054)
- Detects 10ns transients
- 8-bit (Model MTX 162) and 10-bit (Models MTX 1052 & MTX 1054) A/D converter
- Vertical sensitivities of 250 $\mu$ V-100V/div (300V CAT II)
- Advanced trigger modes and SPO (Smart Persistence Oscilloscope) analysis
- Stackable with direct PC connection via USB or Ethernet
- PC operating software (included) and LabWindows/LabView drivers with Windows-like environment (printing, standard files, etc.)
- Local or remote Ethernet universal communication

### ► SPECIFICATIONS

MODELS	MTX 1052 / MTX 1054
<b>INTERFACE</b>	
Screen Specifications	Color PC screen (min. resolution: 1024 x 768)
Display Mode	8 x 10 div.- Multi-windowing (control panel, trace, zoom, FFT, etc.)
Traces on Screen	4 traces + 4 references
Screen Control	Windows-like & online help – all commands available via mouse
<b>VERTICAL</b>	
Vertical Sensitivity	2.5mV – 100V/div, up to 250 $\mu$ V/div with vertical expansion
Bandwidth	150MHz (bandwidth limiter: 15MHz, 1.5MHz or 5kHz)
Channels	2 or 4 channels, class 1, common ground
<b>HORIZONTAL</b>	
Time Base Speed	35 ranges from 1ns to 200s/div
<b>TRIGGER</b>	
Mode	Auto, Triggered, One-shot ROLL, Auto-level at 50%
Source	CH1, CH2, EXT, Line or CH1 to CH4, Line
Type	Edge, Pulse Width or Delay (40ns to 10.5s), counting (2 to 16,384 events), TV (525 = NTSC, 625 = PAL/SECAM), Pre-trigger adjustable from 0 to 100%, Hold-off (40ns to 10.5s)
<b>DIGITAL MEMORY</b>	
Max. Sampling Speed	Repetitive = 100GS/s; One-shot = 200MS/s
Vertical Resolution	10 bits (9 bits used)
Memory Capacity	Depth = 50,000 points – storage capacity depends on PC configuration used
<b>COMMUNICATION</b>	
Software	PC operating software and LabWindows/LabView drivers included
<b>SPO (SMART PERSISTENCE OSCILLOSCOPE)</b>	
Duration of Persistence	100ms, 200ms, 500ms, 1s, 2s, 5s, 10s and infinite
Performance	Acquisition rate 50k waveforms/s/channel, no. of samples acquired: 19MS/s/channel
<b>MEASUREMENT PROCESSING</b>	
FFT Analyzer/MATH Functions	FFT (calculation over 2048 points), +, -, x, / – "Made-to-measure" function editor
Manual Cursors	dv, dt, 1/dt, phase – cursors linked or unlinked to trace
Automatic Measurements	2 or 19 measurements out of 19 + automatic phase on any type of curve markers and limits
<b>RECORDER MODE</b>	
Duration/Sampling	Duration: 2s to 31 days / Sampling interval: 40 $\mu$ s to 53.57s
<b>HARMONIC ANALYZER</b>	
Analysis Range	Fundamental from 40Hz to 1kHz + 31 orders on 1 to 4 channels
Processing	Total RMS value, THD and selected order (%F, phase, frequency, Vrms)

CATALOG NO.	DESCRIPTION
2150.10	PC Scope Module Model MTX 1052B-PC (2-Channel, 150MHz)
2150.11	PC Scope Module Model MTX 1052BW-PC (2-Channel, Wi-Fi, 150MHz)
2150.12	PC Scope Module Model MTX 1054B-PC (4-Channel, 150MHz)
2150.13	PC Scope Module Model MTX 1054BW-PC (4-Channel, Wi-Fi, 150MHz)

