

MEGOHMMETERS

5000V Digital/Analog

Models 6550 & 6555

Expert tools for testing insulation safely and accurately; ideal for use on rotating machinery and cables operating at higher voltages



SPECIFICATIONS



MODELS	6550	6555
INSULATION TESTS		
Test Voltage	500V 1000V 2500V 5000V 10,000V 15,000V	10kΩ to 2000GΩ (2TΩ) 10kΩ to 4000GΩ (4TΩ) 10kΩ to 10,000GΩ (10TΩ) 10kΩ to 15,000GΩ (15TΩ) 10kΩ to 25,000GΩ (25TΩ)
Fixed Test Voltages	500/1000/2500/5000/ 10,000V	500/1000/2500/5000/ 10,000/15,000V
Variable Voltages	Variable: 40 to 10kV Three user programmable voltage schemes	Variable: 40 to 15kV Three user programmable voltage schemes
Ramp Mode	Programmable ramps: start voltage/end voltage/duration	
Ramp Configuration Range	40 to 1100V/500 to 10,000V	40 to 1100V/500 to 15,000V
Step Mode	Up to 10 steps (voltage and duration configurable for each step)	
Voltage Measurement After Test	0 to 2500V _{AC} ; 0 to 4000V _{DC}	
Capacitance Measurement	0.05 to 9.999μF/10.00 to 49.99μF	
Leakage Current Measurement	0 to 8mA	
Discharge After Test	Yes/Automatic	
Additional Test Stop Modes		
I-Limit	Programmable: 0.2 to 5mA	
Early-Break	di/dt	
Timer	Up to 99 minutes 59 seconds	
Burn Mode	Constant testing	
Ratio Calculation	PI, DAR, DD	
Calculation of R at ref. T°	Yes	
Measurement Display Filter	3 filters with 3 possible time-constants	
Graphs on Display	R(t)+V(t); I(t); I(V)	
Storage	256 registers, stores 80,000 points: R, V, I and date	
Communication	USB optically-isolated port	
PC Software	DataView®	
Power Supply	NiMH rechargeable batteries, two 9.6V 4Ah battery packs charging by external voltage: 90 to 260V; 50/60Hz	
Battery Charging	Battery charging allowed while performing insulation measurements	
Electrical Safety	1000V CAT IV; IEC61010-1 and IEC 61557	
EMC, Mechanical Protection, Altitude	EN 61326-1, IP54, 3000m	
Dimensions / Weight	13.39 x 11.81 x 7.87" (340 x 300 x 200mm)/approx. 6.2kg (13.7lb)	

FEATURES

- True Megohmmeter®
- Fixed or programmable test voltage from 40V to 10kV/15kV
- Wide measurement range from 10kΩ to 30TΩ
- 5mA charging current
- Step voltage testing
- Ramp voltage testing
- Automatic calculation of DAR / PI / DD /ΔR (ppm/V) ratios
- Large, backlit graphical LCD screen with digital display, bargraph and R(t)+V(t), I(t) and I(V) graphs
- Multiple test modes: voltage ramp and step with "Burn-In", "Early-Break" and "I-Limit" modes
- Three filter settings to optimize measurement stability
- Calculation of R at a reference temperature
- Storage of 80,000 measurements
- Includes DataView® software for data storage, real-time display, analysis and report generation
- Optically-isolated USB communication for transfer onto PC and report generation with DataView® software

PRODUCT INCLUDES

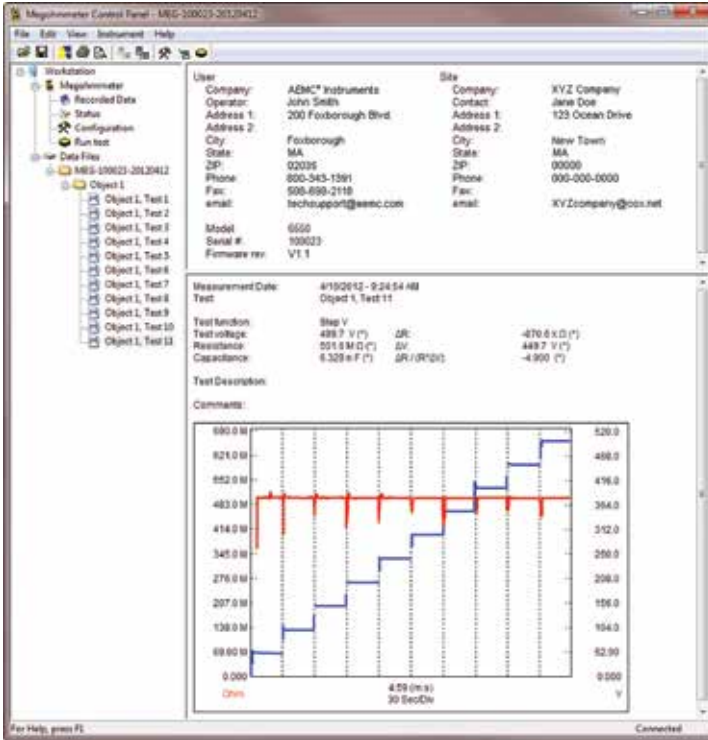
Small classic tool bag, set of color-coded (red/blue/black) 9 ft (15kV) integral leads and alligator clips (1000V CAT IV), one 15kV jumper lead (blue), set of two color-coded test probes (red/black-1000V CAT IV), optical USB cable, 115V US power cord, 9.6V rechargeable NiMH batteries.



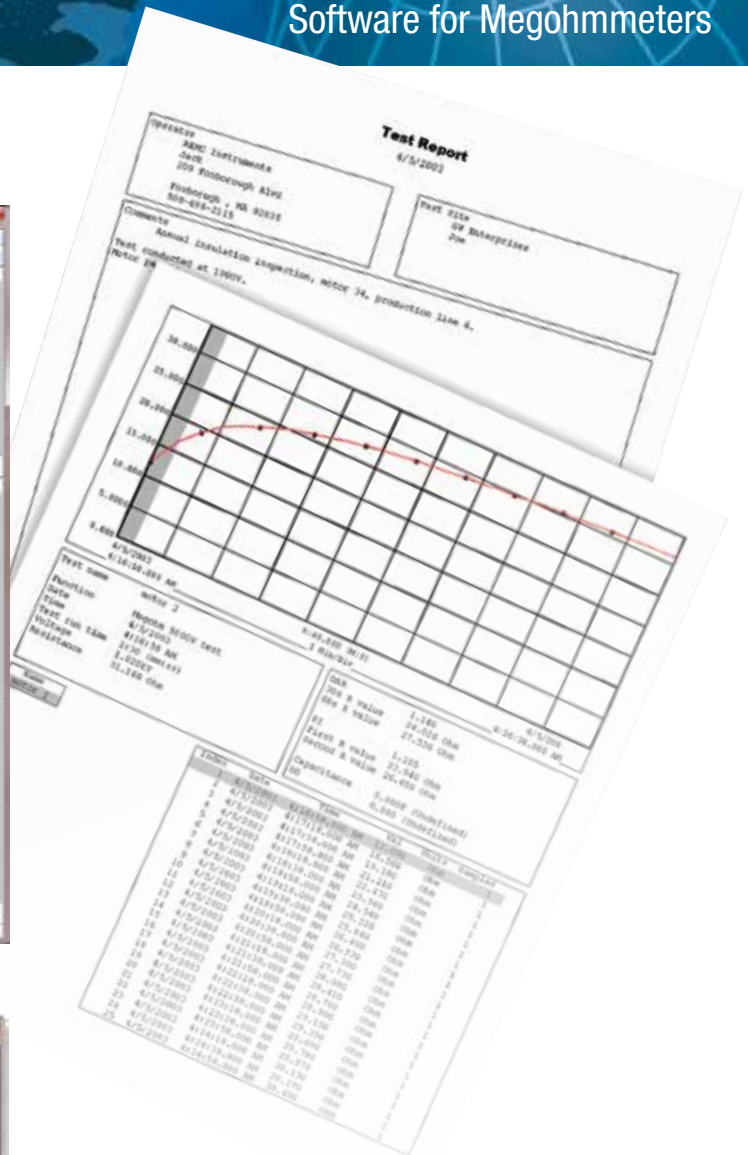
USB Stick

Quick start user guide, and USB stick supplied with DataView® software and user manual.

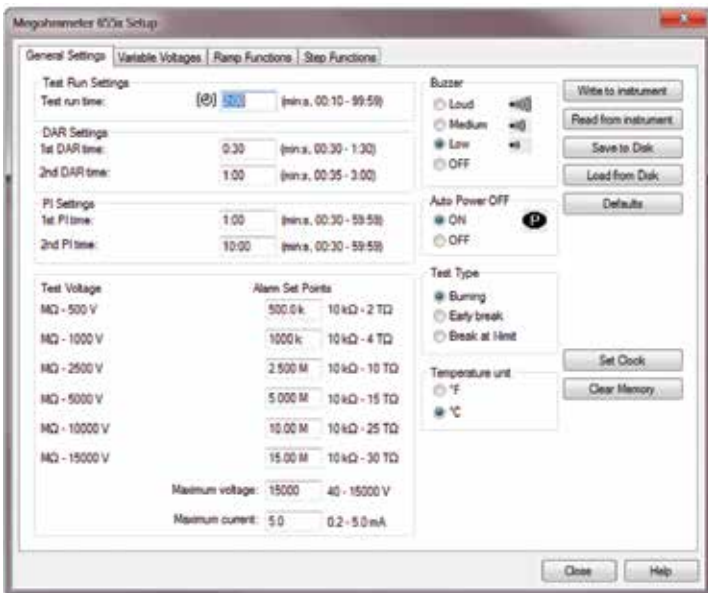
DataView® Displays



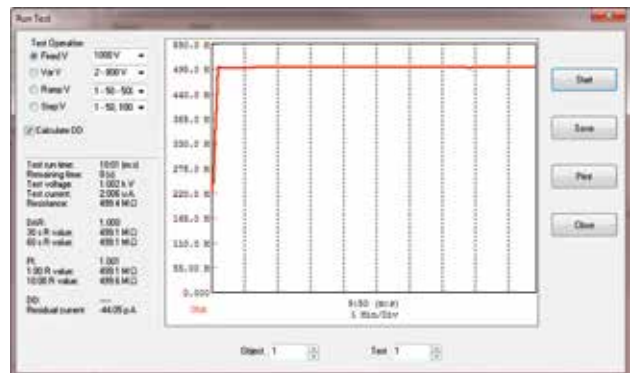
All stored test results presented on screen.



Standard and customized reports generated from DataView® software.



Clear and straightforward set up of parameters.



Real-time display of measurement results.

CATALOG NO.	DESCRIPTION
2130.31	Megohmmeter Model 6550 (Graphical, Analog Bargraph, Backlight, Alarm, Timer, 500V, 1000V, 2500V, 5000V, 10kV, Ramp, StepV, Variable, Auto DAR/PI/DD, USB Stick w/DataView® software)
2130.32	Megohmmeter Model 6555 (Graphical, Analog Bargraph, Backlight, Alarm, Timer, 500V, 1000V, 2500V, 5000V, 10kV, 15kV, Ramp, StepV, Variable, Auto DAR/PI/DD, USB Stick w/DataView® software)

DataView®

Data Analysis and Reporting Software



**Configure all functions of the Megohmmeter
Models 1060, 5060, 5070, 6526, 6532, 6534, 6550 & 6555**



- Print reports of all test results
- Select test voltage and run tests from your computer with a simple click and execute process
- Capture and display data in real-time
- Retrieve data from the instrument's memory for:
 - Over 1500 insulation resistance measurements
 - Over 4000 resistance measurements
- Display DAR and PI ratios
- Plot graphs of manual and timed tests
- Include your analysis comments section with the report
- Store a library of setups for different applications
- Certification of results through report generation
- Free updates are available on our website www.aemc.com

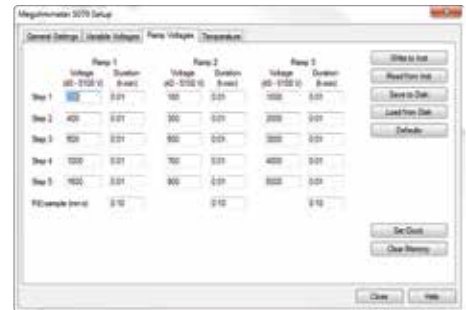
Typical DataView® Functional Displays



Four tabbed dialog boxes allow for clear and easy setup of all functions of the Model 5070, including setup for variable voltage and alarm set points, as well as step voltage tests and temperature compensation.

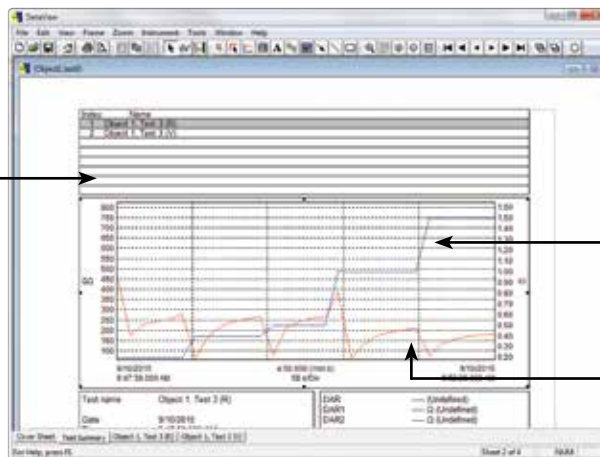


Variable Voltage selections from 40 to 5100V and can also be programmed along with alarm set points.



Model 5070 includes Ramp Function which allows programming of three different ramp test profiles, each containing up to five voltage steps between 40 and 5100V and time per step of up to 10 hours.

Test result status box displays complete test results in real-time



Step voltage during the test run

Insulation resistance with temperature compensation

Run test and display text and graphical results from one dialog box. Model 5070 also displays step voltage.