

Data recording in water and wastewater processes

Keeping better process compliance records using ABB's RVG200 data recorder

A complete view of your water and wastewater process data at your fingertips



Introduction

ABB's RVG200 next generation paperless data recorder marks the next evolution in its highly successful ScreenMaster paperless recorder family. With a host of new features, including touchscreen operation and totalisation functions, the RVG200 makes it easier than ever to access up to the minute data on your process.

How can the RVG200 help?

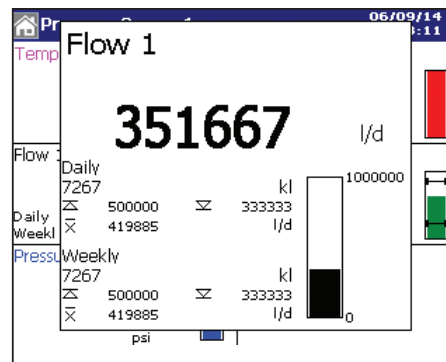
ABB's new RVG200 paperless data recorder incorporates a number of advanced features, providing you with slick, easy and secure access to your process data.

Using the device's intuitive icon-based menus and 'swipeable' interface, you can rapidly find the data you need and can view it in a variety of formats, including individual or grouped data in chart, bar graph or digital indicator displays.

The RVG200 incorporates many features that make it highly suited for data recording in water and waste water treatment applications.

Dual flow totalizers per channel

Each of the RVG200's 24 recording channels features two independent flow totalizers. With this feature, you can reset one totalizer whilst the other provides a continuous total value.



Alternatively, each totalizer can be set to reset at different intervals, for example, one resetting daily while the other resets on a weekly basis.

Automatic recording of daily/weekly/monthly flow totals

The flow totalizers can be easily configured to reset automatically at specified times, such as on a daily, weekly or monthly basis. Before resetting, the flow totalizer's reading is recorded to the totalizer log.

Flow totalizer log

All totalizer events including starts, stops and resets are logged to the totalizer log together with details of their associated totalizer readings, times and dates. Any routine scheduled updates of the flow totalizer readings are also be entered automatically into the log.

The flow totalizer log gathers all of the totalizer readings into one place, from where they can be downloaded for review using ABB's DataManager Pro analysis software.

Totalizer Log					05/09/14
					08:45:09
No	Tag/Value	Source Tag	Date	Time	
32	Daily	Flow 1	02/09/14	00:00:00	
Σ	35908 kl				
33	Daily	Flow 1	03/09/14	00:00:00	
Σ	35999 kl				
34	Daily	Flow 1	04/09/14	00:00:00	
Σ	36099 kl				
35	Daily	Flow 1	05/09/14	00:00:00	
Σ	36014 kl				
36	Daily	Flow 1	06/09/14	00:00:00	
Σ	36000 kl				
37	Weekly	Flow 1	06/09/14	00:00:00	
Σ	258054 kl				

Discharge limit alarms

In many cases, the quantity of waste water discharged by a process plant, factory or municipal plant is restricted by the local environmental agency, with tough fines being incurred if limits are exceeded. To protect against this, the RVG200 enables you to apply alarm limits to any of the flow totalizers, alerting you whenever a discharge limit is approaching or has been reached.

Remote access via Ethernet

The RVG200 can be easily integrated into your SCADA system via standard Ethernet communications. The RVG200's flow totalizers can be remotely read and operated via its integrated webservice using a PC's web browser or smart phone.

Find out more

For more information about the benefits of using the RVG200 in your effluent discharge process, please contact your local ABB sales representative or visit www.abb.com/recorders.

ABB Limited

Howard Road
St. Neots
Cambridgeshire PE19 8EU
UK
Tel: +44 (0)1480 475321
Fax: +44 (0)1480 217948