

testo 876 – the thermal imager in flexible camcorder design

The thermal imager testo 876 stands out thanks to its large rotatable display. This allows you to keep the display in view when thermographing in any position, securely reaching every corner. Thanks to exchangeable lenses, you can guarantee that you always have the right image section in your display.

For you, that means: You see more and have more flexibility when thermographing!



The 7 most important advantages of the **testo 876**

1. Fold-out, rotatable display

Thanks to the fold-out, rotatable display, you have clear view in any position when thermographing



2. High image quality due to NETD < 80 mK

Thanks to a temperature resolution of < 80 mK, even the smallest temperature differences are visible with the testo 876.



3. Exchangeable lenses

A wide-angle and a telephoto lens allow you the adaptation to the very different sizes and distances of measurement objects.



4. Integrated digital camera

With the testo 876, you can store a real image of every measurement site parallel to the infrared image.



5. Lens protection glass

The germanium lens protection glass protects the optics from dirt and scratching.



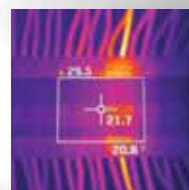
6. Voice recording with the practical headset

With the integrated voice recording, you can comment any infrared image directly during the application. This valuable information is stored together with the thermal image.



7. Min/Max on Area calculation

The minimum and maximum values of an image section can be determined live directly on site and at a glance.



Technical data of the thermal imager



Product data	testo 876
Image output	
Infrared	
Detector type	FPA 160 x 120 pixels, a.Si
Thermal sensitivity (NETD)	< 80 mK at 30 °C
Field of view / min. focusing distance	32° x 23° / 0.1 m (standard lens) 9° x 7° / 0.5 m (telephoto lens)
Geometric resolution (IFOV)	3.3 mrad (standard lens), 1.0 mrad (telephoto lens)
Image refresh rate	9 Hz
Focus	manual and motor focus
Spectral range	8 to 14 µm
Visual	
Image size / min. focusing distance	640 x 480 pixels / 0.4 m
Image presentation	
Image display	3.5" Fold-out LCD with 320 x 240 pixels
Display options	IR image only / real image only/ IR and real image
Video output	USB 2.0
Colour palettes	4 options: iron, rainbow, blue-red, shades of grey
Measurement	-20 °C to 100 °C / 0 °to +280 °C (switchable)
Temperature range	±2 °C, ±2% of m. v.. (-20 °C to +280 °C)
Accuracy	
Emissivity / reflected temperature compensation	0.01 to 1 / manual
Imager equipment	
Digital camera	✓
Motor focus	✓
Standard lens (32° x 23°)	✓
Telephoto lens (9° x 7°)	optional
Voice recording	✓
Display of surface moisture distribution	yes using manual input
Measuring functions	
Measurement	standard measurement (1-point)
Hot/Cold Spot Recognition	✓
Isotherms	✓
Min-/Max on Area	✓
Image storage	
File format	.bmt; export options in .bmp, .jpg, .png, .csv, .xls
Storage device	SD card 2 GB (approx. 1,000 images)
Power supply	
Battery type	fast-charging, Li-ion battery can be changed on-site
Operating time	approx. 4 hours
Charging options	in instrument or optionally in charger, with car adapter
Mains operation	yes
Ambient conditions	
Operating temperature range	-15 °C to 40 °C
Storage temperature range	-30 °C to 60 °C
Air humidity	20% to 80% non-condensing
Housing protection class	IP 54
Vibration (IEC 68-2-6)	2G
Physical features	
Weight	approx. 900 g
Dimensions (L x W x H) in mm	approx. 210 x 85 x 97
Tripod mounting	yes
Housing	ABS
PC software	
System requirements	Windows XP (Service Pack 2), Windows Vista, Windows 7, interface USB 2.0
Standards, tests, warranty	
EU Directive	2004 / 108 / EC
Warranty	2 years

Ordering data **testo 876**

Order no.	0560 8761
Detector	160 x 120 pixels
Thermal sensitivity (NETD)	< 80 mK
Temperature range	-20 °C to +280 °C
Image refresh rate	9 Hz
Standard lens 32° x 23°	✓
Exchangeable telephoto lens 9° x 7°	(✓)
Integrated digital camera	✓
Voice recording using headset	✓
Motor focus	✓
Display of surface moisture (via manual input)	✓
Isotherm display in instrument	✓
Min/Max on Area calculation	✓
Auto Hot/Cold Spot Recognition	✓

(✓) Optional ✓ Standard

The imager is delivered in a robust case incl. pro software, carrying strap, SD card, USB cable, mains unit, and Li ion rechargeable battery.

testo 876 set

In addition to the equipment of the testo 876, the set also includes:

- Telephoto lens 9° x 7°
- Lens protection glass
- Additional battery
- Charger

Part no.: 0560 8762

Your savings with the
testo 876 in a set



Accessories **testo 876**

	Order no.
Fast battery charger Desktop charging station for two rechargeable batteries for the optimization of the charging time	0554 8851
Additional battery Additional Lithium ion rechargeable battery for extending the operating time	0554 8852
Lens protection glass Special Germanium protective glass for optimum protection of the lens from dust and scratching	0554 8805
Retrofit telephoto lens Please contact our customer service	-
Aluminium tripod Professional, extremely light and stable aluminium tripod with Quick-Release legs and 3-way tripod head	0554 8804
Emissivity adhesive tape Adhesive tape, e.g. for bare surfaces (roll, L.: 10 m, W.: 25 mm), $\epsilon=0.95$, temperature-resistant to +250 °C	0554 0051
Car charging adapter Practical charging option for the thermal imager when travelling by car – can be used anywhere	0554 8817
ISO calibration certificates Calibration points at 0 °C, 25 °C, 50 °C	0520 0489
Calibration points at 0 °C, 100 °C, 200 °C	0520 0490
Freely selectable calibration points in the range -18 °C to 250 °C	0520 0495