

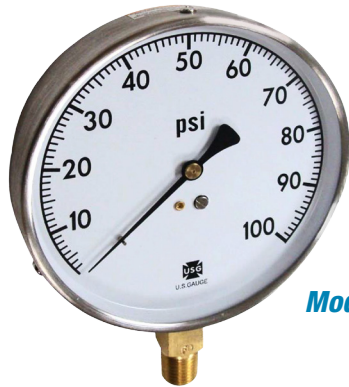


## SPECIAL APPLICATION GAUGES

# Model 5105 4-1/2" Mechanical Contractors Gauges

### DESCRIPTION

The U.S. Gauge Model 5105 mechanical contractors gauge was designed for a wide variety of industrial applications, but is especially suited for HVAC systems. The rugged gauge case is made of stainless steel to provide the protection needed in corrosive environments. All gauges include a zero adjust feature.



Model 5105

### SPECIFICATIONS

- SIZES:** 4-1/2"
- RANGES:** See spec number selection chart below
- ACCURACY:** ±1.5-1.5% of span (Grade A)
- BOURDON TUBE:** Beryllium copper (VAC and 15 psi) and phosphor bronze (compound pressures and 30 psi and above)
- WINDOW:** Polycarbonate
- DIAL:** Cupped aluminum with white background and black marking, psi scale standard with dual scale optional
- POINTER:** Black aluminum, adjustable
- CASE AND RING:** Stainless steel case and slip ring
- CONNECTION:** Brass, 1/4-18 NPT lower mount

### Spec Number Selection Chart

Specifications	Model 5105 1/4-18 NPT Lower Mount				
<b>Bourdon Tube</b>	<b>Beryllium Copper (VAC and 15 psi) – Phosphor Bronze (compound pressures and 30 psi and above)</b>				
<b>Connection</b>	<b>Brass</b>				
<b>Ranges</b>	<b>Figure Interval</b>		<b>Smallest Interval</b>		<b>Spec No.</b>
VAC-0-30" Hg	5" VAC		0.2"		160803A
30"-0-30 psi	10" VAC	5 psi	1" VAC	0.5 psi	160804A
30"-0-60 psi	10" VAC	10 psi	2" VAC	1 psi	160805A
30"-0-150 psi	30" VAC	10 psi	2" VAC	1 psi	160806A
0-15 psi	1		0.1		160808A
0-30 psi	5		0.2		160809A
0-60 psi	5		0.5		160810A
0-100 psi	10		1		160811A
0-160 psi	20		1		160812A
0-200 psi	20		1		160813A
0-300 psi	30		2		160814A
0-600 psi	50		5		160815A
0-1000 psi	100		10		160816A