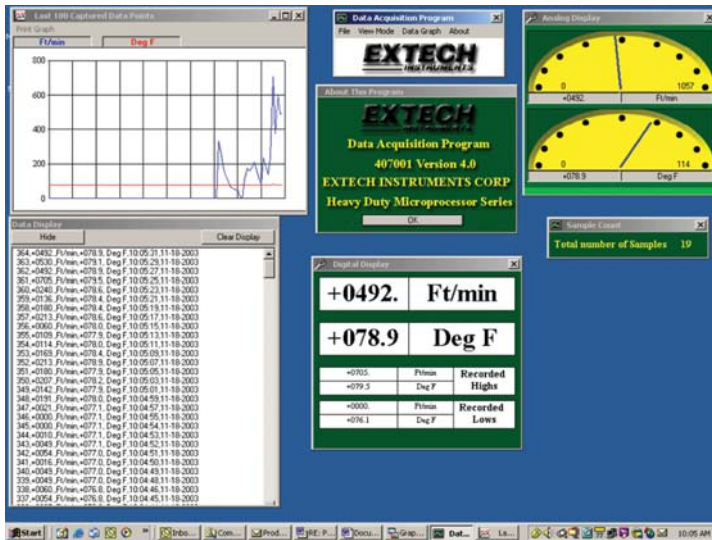


Data Acquisition Software and Cable

For use with Extech's Heavy Duty meters

Features:

- Enables user of Extech's Heavy Duty series to capture, display and store readings on a PC
- Programmable sampling time: 1 sec to 60 mins
- Import data into Lotus or Excel
- Includes Windows® 95/98/NT/2000 compatible software on CD-ROM and RS232 serial cable



407001
Data Acquisition Software



407001-USB
RS-232 to USB convertor
(optional accessory)

Ordering Information:

407001Data Acquisition Software

Accessories

407001-USB ..USB Cable and software drivers